

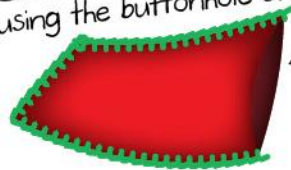


# MAKE YOUR OWN LOVE MONSTER



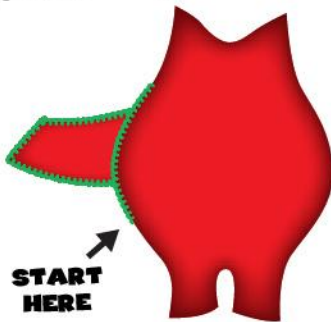
## DIRECTIONS:

- 1. CUT** out the templates on the pages.
- 2. TRACE** the template onto felt. When tracing the body and arms put two pieces of felt together and cut doubles.
- 3. SEW** buttons onto the eyes.
- 4. PASTE** eyes, mouth, nose, and hearts onto the front of the monster and let dry.
- 5. SEW** the edges of both arms using the buttonhole stitch.



← 2 PIECES TOGETHER

- 6. SEW** the body together beginning at the start point using the buttonhole stitch. Insert arm between the two body pieces and sew just the top layer of the arm to the body. (Backside of the arm is left open for stuffing purposes.) Continue to sew two body pieces together until you reach the second arm. Again, attach the arm, sewing on only the top layer. Continue sewing around the body until you return to the starting point.



START HERE

- 7. STUFF** the monster through the arm holes.

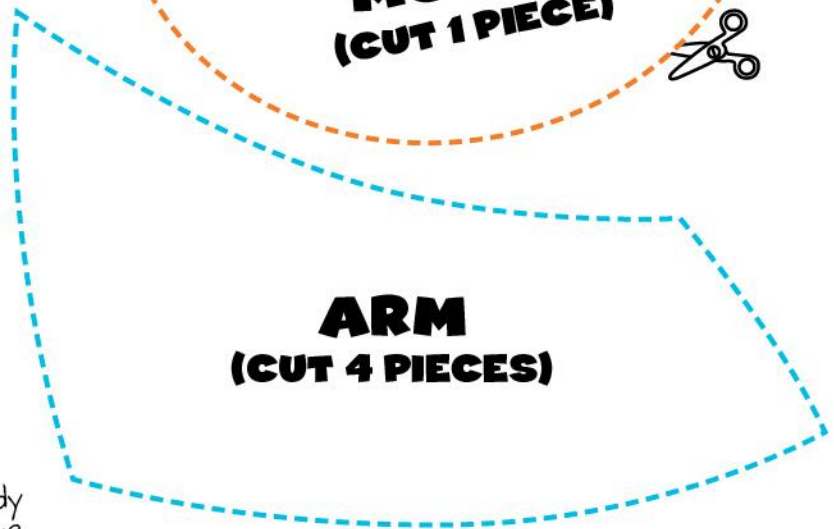
- 8. SEW** up the backside of the arms using the same buttonhole stitch.



TEETH (CUT 1 PIECE)



MOUTH (CUT 1 PIECE)



ARM (CUT 4 PIECES)



OUTER HEART (CUT 1 PIECE)

## SUPPLIES NEEDED

Colorful Felt, Craft Thread, Embroidery Needle, Tacky Glue, 2 Small Buttons, 2 Large Buttons, Poly Fill, Scissors, Pencil

Your finished Love Monster should look like me!



# SCRIBBLE TOWN!



# MAKE YOUR OWN LOVE MONSTER



**EYE**  
(CUT 2 PIECES)



**INNER HEART**  
(CUT 1 PIECE)

**INSERT ARMS  
HERE**



**BODY**  
(CUT 2 PIECES)

**START & END  
STITCHING HERE**

